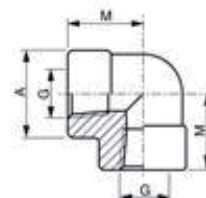




3000 Lbs
NPT

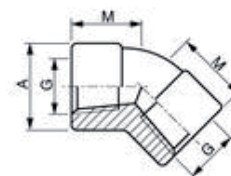
DN	G	M	A	Peso (Kg)
8	1/4"	25	25	0,145
10	3/8"	29	33	0,290
15	1/2"	33	38	0,415
20	3/4"	38	46	0,665
25	1"	44	56	1,130
32	1 1/4"	51	62	1,270
40	1 1/2"	60	75	2,405
50	2"	64	84	2,695

Curva 90° F-F 3000# NPT



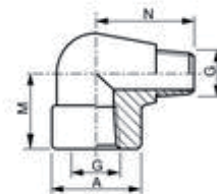
DN	G	M	A	Peso (Kg)
8	1/4"	19	25	0,120
10	3/8"	22	33	0,240
15	1/2"	25	38	0,325
20	3/4"	29	46	0,550
25	1"	33	56	0,900
32	1 1/4"	35	62	1,100
40	1 1/2"	43	75	1,950
50	2"	45	84	2,220

Curva 45° F-F 3000# NPT



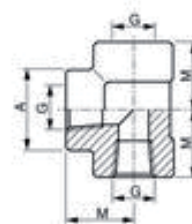
DN	G	M	N	A	Peso (Kg)
8	1/4"	25	32	25	0,140
10	3/8"	29	37,5	33	0,275
15	1/2"	33	41,5	38	0,460
20	3/4"	38	47,5	46	0,670
25	1"	44	57	56	1,100
32	1 1/4"	51	66,5	62	1,520
40	1 1/2"	60	71,5	75	2,450
50	2"	64	84,5	84	3,855

Curva 90° M-F 3000# NPT



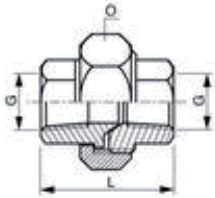
DN	G	M	A	Peso (Kg)
8	1/4"	25	25	0,180
10	3/8"	29	33	0,365
15	1/2"	33	38	0,545
20	3/4"	38	46	0,830
25	1"	44	56	1,420
32	1 1/4"	51	62	1,700
40	1 1/2"	60	75	3,200
50	2"	64	84	3,500

Te Igual 3000# NPT



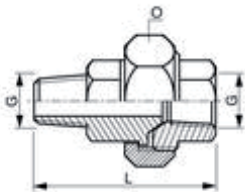
3000 Lbs
NPT

Junção F-F 3000# NPT



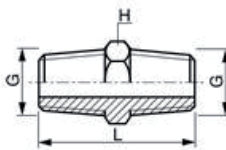
DN	G	L	O	Peso (Kg)
8	1/4"	42,5	36	0,180
10	3/8"	47,5	47	0,330
15	1/2"	52	47	0,360
20	3/4"	57	56	0,540
25	1"	63	65	0,765
32	1"1/4"	70	78	0,975
40	1"1/2"	78	86	1,545
50	2"	89	103	2,150

Junção M-F 3000# NPT



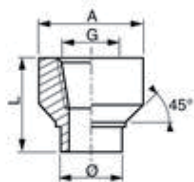
DN	G	L	O	Peso (Kg)
8	1/4"	63	36	0,210
10	3/8"	69	47	0,440
15	1/2"	77	47	0,450
20	3/4"	80	56	0,610
25	1"	97	65	0,945
32	1"1/4"	101	78	1,200
40	1"1/2"	110	86	1,900
50	2"	120	103	2,700

Casquilho Duplo M-M 3000# NPT



DN	G	L	H	Peso (Kg)
8	1/4"	36	15	0,030
10	3/8"	40	18	0,045
15	1/2"	48	22	0,070
20	3/4"	52	27	0,120
25	1"	60	35	0,205
32	1"1/4"	64	46	0,400
40	1"1/2"	68	50	0,550
50	2"	71	62	0,740

União M-F 3000# NPT



DN	G	L	A	O	Peso (Kg)
8	1/4"	30,5	28	13,5	0,080
10	3/8"	30,5	32	17,2	0,095
15	1/2"	33,5	38	21,3	0,150
20	3/4"	35	44,5	26,7	0,225
25	1"	43	57,5	33,4	0,445
32	1"1/4"	48	63,5	42,4	0,730
40	1"1/2"	51	76,1	48,3	1,050
50	2"	57,5	92	60,3	1,340



3000 Lbs
NPT

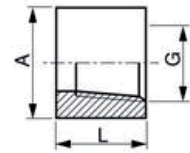
DN	G	L	A	Peso (Kg)
8	1/4"	35	19	0,065
10	3/8"	38	22	0,065
15	1/2"	48	29	0,145
20	3/4"	51	35	0,225
25	1"	60	44	0,440
32	1"1/4"	67	57	0,725
40	1"1/2"	79	64	1,040
50	2"	86	76	1,340

União F-F 3000# NPT



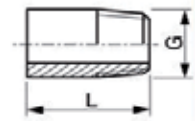
DN	G	L	A	Peso (Kg)
8	1/4"	17,5	19	0,035
10	3/8"	19	22	0,030
15	1/2"	24	29	0,070
20	3/4"	25,5	35	0,105
25	1"	30	44	0,210
32	1"1/4"	33,5	57	0,355
40	1"1/2"	39,5	64	1,040
50	2"	43	76	1,340

Meia União F. 3000# NPT



DN	G	L	Peso (Kg)
8	1/4"	36	0,030
10	3/8"	36	0,040
15	1/2"	36	0,055
20	3/4"	36	0,075
25	1"	36	0,105
32	1"1/4"	48	0,185
40	1"1/2"	48	0,295
50	2"	48	0,395

Ponta Roscada SCH80 NPT

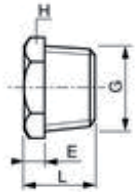


DN	G	Peso (Kg)	Natureza	Peso (Kg)	Natureza
8	1/4"	0,075	L100mm	0,055	L75mm
10	3/8"	0,100	L100mm	0,075	L75mm
15	1/2"	0,150	L100mm	0,110	L75mm
20	3/4"	0,200	L100mm	0,150	L75mm
25	1"	0,305	L100mm	0,205	L75mm
32	1"1/4"	0,365	L100mm	0,270	L75mm
40	1"1/2"	0,590	L100mm	0,445	L75mm
50	2"	0,685	L100mm	0,505	L75mm

União M-M SCH80 NPT

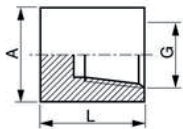


Tampão Macho c/Hexa 3000# NPT



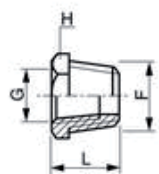
DN	G	L	E	H	Peso (Kg)
8	1/4"	17	6	16	0,025
10	3/8"	21	8	17,5	0,040
15	1/2"	23	8	22	0,065
20	3/4"	26	10	27	0,125
25	1"	29	10	35	0,215
32	1"1/4"	35	14	44,5	0,415
40	1"1/2"	37	16	51	0,575
50	2"	39	17	63,5	0,990

Tampão Femêa c/Hexa 3000# NPT



DN	G	L	A	Peso (Kg)
8	1/4"	25	19	0,050
10	3/8"	25	22	0,080
15	1/2"	32	29	0,115
20	3/4"	37	35	0,200
25	1"	41	44	0,310
32	1"1/4"	44	57	0,600
40	1"1/2"	44	64	0,725
50	2"	48	76	1,050

Casquilho Duplo M-F 3000# NPT



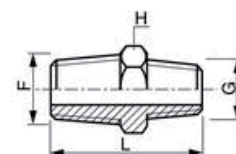
DN	F	G	L	H	Peso (Kg)
8-5	1/4"	1/8"			
10-8	3/8"	1/4"	17	17,5	0,030
15-8	1/2"	1/4"	20	22	0,040
15-10	1/2"	3/8"	20	22	0,035
20-8	3/4"	1/4"	22	27	
20-10	3/4"	3/8"	22	27	
20-15	3/4"	1/2"	22	27	0,050
25-10	1"	3/8"	25	35	
25-15	1"	1/2"	25	35	0,145
25-20	1"	3/4"	25	35	0,095
32-20	1"1/4"	3/4"	28	44,5	
32-25	1"1/4"	1"	28	44,5	0,215
40-25	1"1/2"	1"	29	51	0,380
40-32	1"1/2"	1"1/4"	29	51	
50-32	2"	1"1/4"	31	63,5	
50-40	2"	1"1/2"	31	63,5	0,470



3000 Lbs
NPT

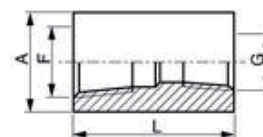
DN	F	G	L	H	Peso (Kg)
8-5	1/4"	1/8"	31	15	0,035
10-8	3/8"	1/4"	39	18	0,055
15-8	1/2"	1/4"	43	22	0,090
15-10	1/2"	3/8"	44	22	0,075
20-10	3/4"	3/8"	46	27	0,140
20-15	3/4"	1/2"	50	27	0,125
25-15	1"	1/2"	55	35	0,400
25-20	1"	3/4"	56	35	0,380
32-25	1"1/4	1"	60	46	
40-25	1"1/2	1"	67	50	0,710
40-32	1"1/2	1"1/4	62	50	
50-40	2"	1"1/2	70	62	0,905

Casquilho Duplo de Redução M-M 3000# NPT



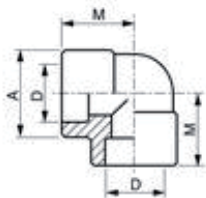
DN	F	G	L	H	Peso (Kg)
8-5	1/4"	1/8"			
10-8	3/8"	1/4"	38	22	0,140
15-8	1/2"	1/4"	48	28	0,210
15-10	1/2"	3/8"	48	28	0,180
20-8	3/4"	1/4"	51	35	
20-10	3/4"	3/8"	51	35	0,260
20-15	3/4"	1/2"	51	35	0,220
25-15	1"	1/2"	60	44	0,410
25-20	1"	3/4"	60	44	0,475
32-25	1"1/4	1"	67	57	0,920
40-25	1"1/2	1"	79	64	
40-32	1"1/2	1"1/4	79	64	1,300
50-25	2"	1"	86	76	
50-40	2"	1"1/2	86	76	1,650

União de Redução F-F 3000# NPT



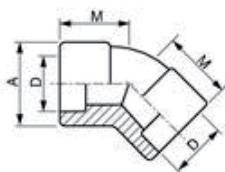
3000 Lbs
SW

Curva 90° F-F 3000# SW



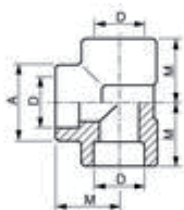
DN	D	M	A	Peso (Kg)
8	1/4"	22	22	0,135
10	3/8"	25	25	0,115
15	1/2"	27	31	0,245
20	3/4"	34	36	0,330
25	1"	36	45	0,515
32	1 1/4"	41	55	0,710
40	1 1/2"	46	60	0,930
50	2"	56	75	1,565

Curva 45° F-F 3000# SW



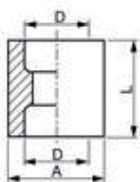
DN	D	M	A	Peso (Kg)
8	1/4"	19	22	0,115
10	3/8"	19	25	0,230
15	1/2"	23	31	0,310
20	3/4"	27	36	0,525
25	1"	28	45	0,855
32	1 1/4"	31	55	1,045
40	1 1/2"	35	60	1,850
50	2"	42	75	2,100

Te Igual F. 3000# SW



DN	D	M	A	Peso (Kg)
8	1/4"	22	22	0,175
10	3/8"	25	25	0,135
15	1/2"	27	31	0,310
20	3/4"	34	36	0,415
25	1"	36	45	0,630
32	1 1/4"	41	55	0,980
40	1 1/2"	46	60	1,305
50	2"	56	75	2,070

União F-F 3000# SW



DN	D	L	A	Peso (Kg)
8	1/4"	26	22	0,055
10	3/8"	26	25	0,0555
15	1/2"	29	31	0,120
20	3/4"	34	36	0,145
25	1"	37	45	0,235
32	1 1/4"	38	55	0,335
40	1 1/2"	38	60	0,430
50	2"	51	75	0,760

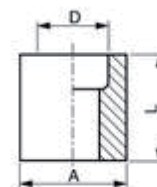


3000 Lbs

SW

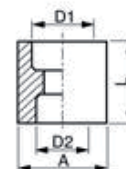
DN	D	L	A	Peso (Kg)
8	1/4"	27	22	0,060
10	3/8"	28	25	0,070
15	1/2"	33	31	0,150
20	3/4"	36	36	0,180
25	1"	42	45	0,305
32	1"1/4	43	55	0,430
40	1"1/2	45	60	0,455
50	2"	56	75	0,930

Meia União F. 3000# SW



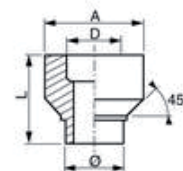
DN	D1	D2	L	A	Peso (Kg)
8-5	1/4"	1/8"			
10-8	3/8"	1/4"	25	25	0,110
15-8	1/2"	1/4"	29	31	0,135
20-8	3/4"	1/4"	35	36	
15-10	1/2"	3/8"	29	31	0,160
20-10	3/4"	3/8"	35	36	
20-15	3/4"	1/2"	35	36	0,170
25-15	1"	1/2"	38	45	0,310
25-20	1"	3/4"	38	45	0,360
32-20	1"1/4	3/4"	38	55	
32-25	1"1/4	1"	38	55	0,555
40-25	1"1/2	1"	38	60	1,250
40-32	1"1/2	1"1/4	38	60	
50-25	2"	1"			
50-40	2"	1"1/2			

União de Redução F-F 3000# SW



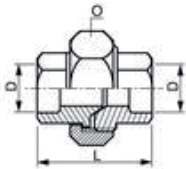
DN	D	L	A	O	Peso (Kg)
8	1/4"	30,5	28	13,5	0,075
10	3/8"	30,5	32	17,2	0,105
15	1/2"	33,5	38	21,3	0,155
20	3/4"	35	44,5	26,7	0,210
25	1"	43	57,5	33,4	0,415
32	1"1/4	48	63,5	42,4	0,700
40	1"1/2	51	76,1	48,3	0,890
50	2"	57,5	92	60,3	1,405

União M-F 3000# SW



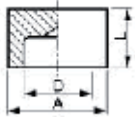
3000 Lbs
SW

Junção F-F 3000# SW



DN	G	L	O	Peso (Kg)
8	1/4"	42,5	36	0,175
10	3/8"	47,5	47	0,350
15	1/2"	52	47	0,385
20	3/4"	57	56	0,525
25	1"	63	65	0,730
32	1"1/4"	70	78	1,235
40	1"1/2"	78	86	1,490
50	2"	89	103	2,415

Tampão Femêa 3000# SW



DN	G	L	A	Peso (Kg)
8	1/4"	15	22	0,035
10	3/8"	17	26	0,060
15	1/2"	19	32	0,090
20	3/4"	23	38	0,150
25	1"	26	45	0,230
32	1"1/4"	28	55	0,390
40	1"1/2"	30	65	0,550
50	2"	36	75	0,780



Curva M-F 90°	 1	Curva M-F Curta 90°	 1A	Curva Fêmea 90°	 2	Curva Fêmea Curta 90°	 2A	Curva Macho 90°	 3
Curva M-F 45°	 40	Curva Fêmea 45°	 41	União de Cruzamento	 85	Joelho Simples 90°	 90	Joelho de Redução F-F 90°	 90R
Joelho M-F Simples 90°	 92	Joelho de Redução M-F	 92R	Joelho c/Junção S/D Fêmea	 95	Joelho c/Junção S/C Fêmea	 96	Joelho c/Junção S/D M-F	 97
Joelho c/Junção S/C M-F	 98	Joelho Simples 45°	 120	Joelho M-F Simples 45°	 121	Tê Simples	 130	Tê de Redução 90°	 130R
Tê c/ Ramal curto 90°	 131	Forquilha 45°	 165	Cruzeta	 180	Forquilha Fisga	 220	Joelho 3 Vias	 221
Tê 4 Vias	 223	União de Redução	 240	Porca de Redução	 241	Casquilho Duplo de Redução	 245	União M-F de Redução	 246

Rosca Exterior (União)	 531								
Peça de Junção	 380	Peça de Junção	 381	Peça de Junção	 382	União M-F Alongamento	 526	União M-F Simples	 529
Junção S/C M-M	 344	Peça de Junção	 370	Peça de Junção	 371	Peça de Junção	 372	Batente p/ Junção	 374
Flange Normal	 321	Junção S/D	 330	Junção S/D M-F	 331	Junção S/C	 340	Junção S/C M-F	 341
Tampão M. (Taco) s/ Cordão	 291	Tampão F.	 300	Batente	 310	Batente Rebaixado	 312	Flange Oval	 320
União Simples	 270	União c/ Rosca Dir. / Esq.	 271	Casquilho Duplo	 280	Casquilho Duplo c/ Rosca Dir. / Esq.	 281	Tampão M. (Taco)	 290